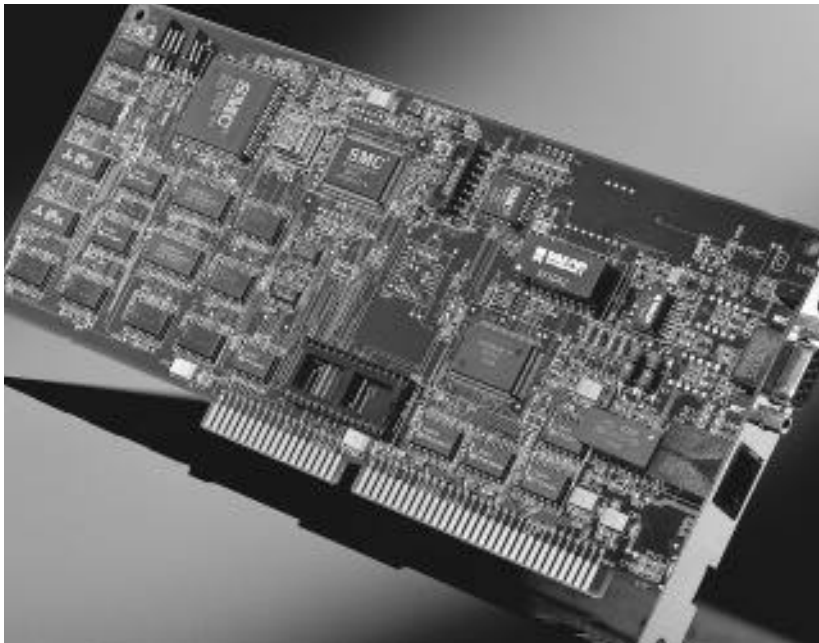




TokenCard Elite

ISA Token Ring Adapter
STP/UTP, 4 Mbps/16 Mbps



Superior Price/Performance Plus Certified Interoperability

SMC's TokenCard Elite™ adapter is based on our own Token Ring controller and custom bus interface silicon for superior performance. A variety of independent testing laboratories, technical partners, and end users have been enlisted to ensure complete compatibility with Token Ring products from IBM and other major vendors.

SMC's MAC-layer controller features dual RISC processors—one implements Token Ring protocols, and the other transfers data between the adapter and the PC—supporting the transmission of multiple frames per token. SMC's bus interface employs a shared memory "windowing" architecture that uses 64 KB of on-board memory while occupying only 16 KB of valuable address space. The result is increased data throughput and faster overall performance.

In tests performed by InfoWorld and LANQuest Labs, the TokenCard Elite was rated among the top performers; and in SMC's own lab, it exhibited a raw throughput *in excess of 25,000 frames/second*.*

And, since it's based on our own proven silicon, SMC can provide more features and higher product quality at competitive prices. In fact, the TokenCard Elite adapter is among the lowest-priced ISA Token Ring adapters on the market today.

The TokenCard Elite is auto-configurable with SMC's EZStart™ utility; even installation of driver files and SNMP agent is automated.

This versatile adapter has RJ-45 and DB-9 connectors, and operates at both 4 and 16 Mbps data rates.



*Call SMC for a free copy of the LANQuest Labs Report 1/94, the InfoWorld Reprint 6/28/93 and SMC's TokenCard Elite Performance and Compatibility Technical Reports.

Features/Benefits

Outstanding Performance

- ◆ MAC-layer controller with dual RISC processors provides faster overall performance
- ◆ Ability to transmit multiple frames per token increases throughput

Easy to Install and Use

- ◆ Auto-configurable with simplified driver installation and adapter management via EZStart utility
- ◆ Single-command utility for NetWare client installation
- ◆ Four preassigned hardware configurations offer speed and flexibility for experienced installers
- ◆ Ring insertion and loopback test status LEDs
- ◆ On-board socket for optional auto-boot ROM

Compatible

- ◆ Fully compliant with IEEE 802.5 and 802.2, and ISO/IEC 8802-5 standards
- ◆ Completely interoperable with IBM Token Ring networks

Desktop Management

- ◆ SMC's PC Agent/SNMP for desktop management from any SNMP-based manager

Versatile

- ◆ Two connectors (RJ-45 and DB-9) support either UTP or STP wiring
- ◆ Operates at either 4 or 16 Mbps data rates

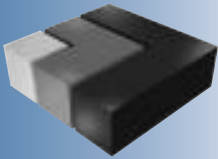
Reliable

- ◆ Lifetime warranty
- ◆ Mean Time Between Failure (MTBF) in excess of 100 years

Support for Popular Network Operating Systems

- ◆ Novell NetWare: DOS ODI and OS/2 ODI Workstation; 286 and 386 (3.x/4.x) Server
- ◆ Microsoft: Windows for Workgroups, Windows 95, Windows NT, and LAN Manager
- ◆ IBM: LAN Server and PC LAN
- ◆ DEC Pathworks
- ◆ NDIS: DOS and OS/2
- ◆ IEEE 802.2 LLC and NetBIOS interface
- ◆ Plus many other drivers available on SMC's Bulletin Board





TokenCard Elite

ISA Token Ring Adapter

STP/UTP, 4 Mbps/16 Mbps

SMC UNITY

LAN Access
Bandwidth Acceleration
Intranetworking

SMC Offices Worldwide
For information, call or fax:

◆ SMC—Headquarters
Hauppauge, NY
Phones: (800) SMC-4-YOU
(516) 435-6000

Fax: (516) 273-1803

◆ SMC—Canada
Oakville, Ontario, CANADA
Phone: (800) SMC-4-YOU

◆ SMC—Latin America
Miami, FLORIDA
Phone: (305) 264-7657

Fax: (305) 264-8321

◆ SMC—France
St. Germain-En-Laye
FRANCE

Phone: 33 (1) 30.87.42.42

Fax: 33 (1) 30.61.41.34

◆ SMC—Europe
Bracknell, Berkshire, UK
Phone: 44 (0) 1344 418800

Fax: 44 (0) 1344 418828

◆ SMC—Northern Europe
Bracknell, Berkshire, UK
Phone: 44 (0) 1344 418820

Fax: 44 (0) 1344 418826

◆ SMC GmbH—
Central Europe
München, GERMANY

Phone: 49 (89) 928806-0

Fax: 49 (89) 928806-30

◆ SMC GmbH—
E. Europe/Middle East
München, GERMANY

Phone: 49 (89) 928791-0

Fax: 49 (89) 9101934

◆ SMC—Australia

Sydney, AUSTRALIA

Phone: 61.2.238.2206

Fax: 61.2.238.2220

Melbourne, AUSTRALIA

Phone: 61.3.653.9461

Fax: 61.3.653.9548

◆ SMC—South Africa

Sandton, Johannesburg

SOUTH AFRICA

Phone: 27 (0) 11 784-0414

Fax: 27 (0) 11 784-0519

◆ SMC—Asia

SINGAPORE

Phone: 65-320-8391

Fax: 65-320-8359

◆ TMC—Japan

Tokyo, JAPAN

Phone: 81 (3) 57212271

Fax: 81 (3) 57212270

◆ SMC—EliteFax™

Fax-on-Demand System

US/Canada: (800) SMC-8329

Elsewhere: (516) 435-6107

◆ World Wide Web

<http://www.smc.com>

Specifications

Adapter Type

8115T

Network Interface

RJ-45, UTP cable, EIA/TIA Categories 3, 4, 5, UL Levels III, IV, V, DB-9, STP cable, IBM Types 1, 2, 6, 8, 9

Weight

5.3 oz. (150 gm)

Size (excluding bracket)

4.5 in. x 9.5 in. (11.4 cm x 24.0 cm)

Connectors

RJ-45 (with on-board media filter)
DB-9

Diagnostic LEDs

Ring Insertion
Loopback Test

Data Rates

4/16 Mbps

Bus Interface

8-bit, 16-bit ISA, EISA

Interface to PC

Shared memory

DMA Channels

None

I/O Base Addresses

200, 220, 240, 260, 280,
300, 320, 340, 360, 380

Interrupt Channels

2/9, 3, 4, 5, 7, 10, 11, 15

RAM

Buffer Size

64 KB

Base Addresses

Any 16 KB block in the range
A0000 to FC000

Window Size

16 KB

Optional Boot ROM

Window Size

16 KB, 32 KB or 64 KB

Base Addresses

C0000, C4000, C8000, CC000,
D0000, D4000, D8000, DC000

Protocols

Native NetWare Core
IBM RPL (Remote Program Load)

Type

27512 (200 ns access time)

Temperature

Operating 32° to 131° F (0° to 55° C)
Storage -4° to 158° F (-20° to 70° C)

Humidity

Operating 10% to 90%
Storage 5% to 95%

Operating Voltage

+5 VDC ±5% @ 1100 mA (typical),
1580 mA (maximum)

Token Ring Standards

IEEE 802.5, 802.2
ISO/IEC 8802-5

Compliances

Safety

UL 1950
CSA 22.2 No. 950 (UL)
EN60950 (TÜV)

Emissions

FCC Class B
CDOC Class B
EN55022 (CISPR 22) Class B
VCCI Class 2
CE Mark

Warranty

Lifetime



Product	Order Number	Description
TokenCard Elite	SMC-TRE	Single-pack
	SMC-TRE/12PK	12-pack
	SMC-TRE/50PK	50-pack
Accessory	SMC-TRROM	Optional boot ROM

SMC

STANDARD
MICROSYSTEMS
CORPORATION

SMC and Standard Microsystems are registered trademarks; and TokenCard Elite, EZStart and EliteFax are trademarks of Standard Microsystems Corporation. Other product and company names are trademarks or registered trademarks of their respective holders.

© Copyright 1994 Standard Microsystems Corporation

11/95 — TR-8115